

Distributed hydrological modelling in the Yata watershed using the WEP model and propagation of rainfall estimation error

YANGWEN JIA

Department of Water Resources, Institute of Water Resources & Hydropower Research, Che-Gong-Zhuang West Road 20, Beijing 100044, China

jiayw@ivhr.com

TSUYOSHI KINOUCI & JUNICHI YOSHITANI

Hydrologic Engineering Team, Hydraulic Engineering Research Group, Public Works Research Institute, Minamihara 1-6, Tsukuba, Ibaraki 305-8516, Japan

Abstract The WEP model is validated in the Yata watershed (166 km²) using the observation data in 2000 and 2001. The simulation is carried out in a time step of 1 h and a grid cell size of 100 m. The impact of rainfall estimation error on annual water budgets was studied by carrying out a sensitivity analysis and the impact of rainfall spatial distribution on discharge prediction was investigated by using gauged rainfall data and radar rainfall data. It was found that the spatial distribution of rainfall during typhoon seasons has a great impact on river discharge prediction. It is concluded that the WEP model is applicable to both short-term prediction of floods and long-term prediction of water budgets with satisfied accuracy.

Key words groundwater level; hydrological model; rainfall estimation error; radar; urbanization; water balance; WEP; Yata watershed

INTRODUCTION

Distributed hydrological modelling is required for hydrological predictions in watersheds with heterogeneous land surfaces, soils and aquifers under uneven distribution conditions of rainfall. A robust distributed hydrological model should be applicable to both long-term prediction of water budgets and short-term prediction of floods with satisfactory accuracy. However, long-term simulations using distributed hydrological models are very few in the literature.

The Yata watershed is located in the northwest of Ibaraki prefecture, Japan, and has an area of 166 km², of which agricultural land use and forest account for about 70%. Several institutions carried out field investigations of groundwater and river discharges in the watershed in the 1970s (Ichikawa *et al.*, 1976). The Public Works Research Institute (PWRI) and the local government in Japan began to monitor water and heat fluxes, river discharges and groundwater levels in 1999. However, there is no continuous long-term observation in the watershed; therefore, a hydrological simulation is required to understand the continuous variations in water budgets, river discharges and groundwater levels.

The WEP (Water and Energy transfer Processes) model is based on that of Jia & Tamai (1998a,b) and was improved at the Public Works Research Institute (Jia *et al.*, 2001). Although the WEP model simulates most of the hydrological processes using

methods similar to the physically-based spatially distributed (PBSD) models like MIKE SHE (Refsgaard & Storm, 1995), its computation time is decreased through applying the Green-Ampt model to infiltration simulation during heavy rainfall and conducting multi-layered modelling of aquifers.

The purposes of this study are to validate the WEP model in the Yata watershed, and to evaluate the impact of rainfall estimation error and rainfall spatial distribution on river discharge prediction. A continuous long-term simulation of 24 years (1978–2001) is under study.

MODEL DESCRIPTION

Model structure

The vertical structure of the WEP model within a grid cell is shown in Fig. 1. The state variables include depression storage on land surfaces and canopies, soil moisture content, land surface temperature, groundwater level, and water stage in rivers, etc. A brief description of modelling approaches of hydrological processes follows with equations and modelling approaches of energy transfer processes referred to in Jia & Tamai (1998a) and Jia et al. (2001).

Modelling approaches of hydrological processes

Evaporation is calculated with the Penman equation and transpiration is calculated by using the Penman-Monteith equation. The average evapotranspiration in a grid cell is obtained by areally averaging those from each land use.

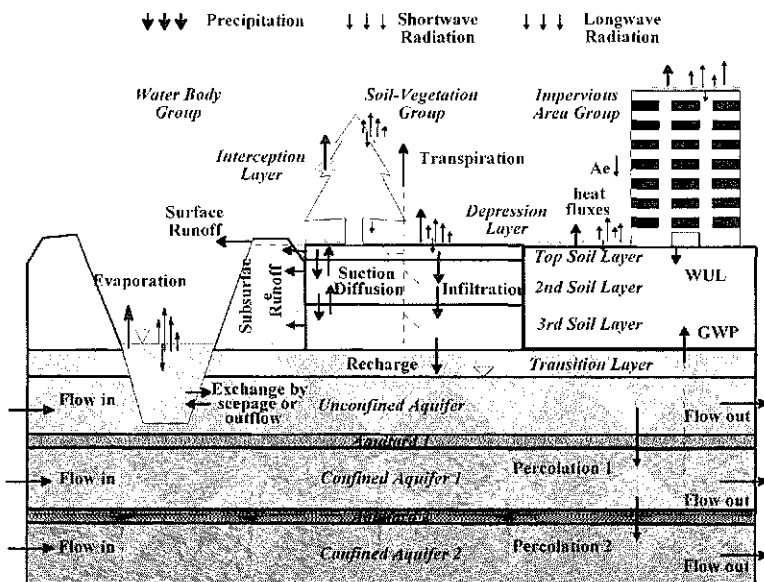


Fig. 1 Schematic illustration of WEP model structure.

Infiltration during heavy rains is calculated utilizing the generalized Green-Ampt model for infiltration into multi-layered soil profiles suggested by Jia & Tamai (1998b), whereas soil moisture movement in unsaturated soils during other periods is solved using the Richards model. A heavy rainfall period is defined as a period during which the rainfall intensity is greater than the saturated soil hydraulic conductivity.

Surface runoff from the soil-vegetation group consists of two parts, namely the infiltration excess during heavy rainfall periods and the saturation excess during the other periods. Infiltration excess occurs when the depression storage on the land surface surpasses its maximum value. The depression storage is balanced with rainfall as inflow and infiltration, evaporation and infiltration excess as outflows. Saturation excess during the remaining periods may occur if the groundwater level in the unconfined aquifer rises and the topsoil layer becomes nearly saturated. It is deduced by applying the Richards model. Subsurface runoff is calculated according to land slopes and unsaturated soil hydraulic conductivities in those grid cells adjacent to rivers.

Groundwater flow in multi-layered aquifers is simulated using the Boussinesq equation and the interactions between surface water and groundwater of the unconfined aquifer are considered through a source term. The source term includes the recharge from unsaturated soil layers, the groundwater outflow to rivers, the water use leakage, the pumped groundwater, the percolation to the lower aquifer, and the evapotranspiration from groundwater. Groundwater outflow is calculated according to the hydraulic conductivity of riverbed material and the difference between river water stage and groundwater head in the unconfined aquifer.

Treated as overland flow, runoff from a grid cell is routed along the steepest (down) of eight directions to its adjacent cells using the kinematic wave method in the 1-D scheme and the downhill Newton method. The computation sequence is determined from the lowest flow accumulation number (headwater area) to the largest flow accumulation number (river mouth). River flow is routed for every tributary and a main channel using the kinematic wave method or the dynamic wave method in the 1-D scheme and the Newton-Raphson method.

MODEL VALIDATION

The Yata watershed, input data and parameters

A diagram of the Yata watershed is shown in Fig. 2. There are three main rivers in the watershed, which flow into the Ushiku Lake. Inside or around the watershed, there are two meteorological gauge stations managed by the local meteorological bureau and one by PWRI. In October 2000, three continuous water stage gaugeing stations were installed and periodical discharge observations were carried out to obtain the relationship between water stage and discharge. Hourly meteorological data from January 1978 to December 2001 were collected.

The land-use data four periods are shown in Table 1. The data of 1994 show that 14% of the watershed is paddy field, other farmland and forest occupy about 50%, and the rest is covered by buildings, rivers, etc.

For aquifer data, borehole geology data at 119 sites within or near the watershed were picked up to clarify the soil stratigraphy of the watershed. The ground soil is

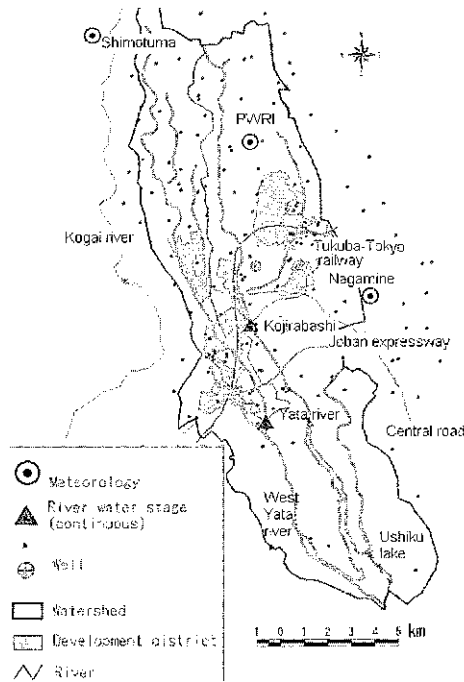


Fig. 2 The Yata watershed.

Table 1 Land use in the Yata watershed (km²).

Types	1976	1984	1989	1994
Forest	36.13	29.00	27.06	26.63
Paddy	24.32	24.62	24.55	23.66
Field	65.56	56.96	57.23	55.39
Under preparation	0.00	0.38	0.30	0.30
Vacant land	19.55	4.23	2.88	3.45
Industrial use	0.00	2.48	2.87	3.01
Housing area	12.45	20.44	21.40	21.71
Road	0.78	5.52	5.87	6.86
Park	0.00	1.00	1.40	1.39
Public works	0.00	12.22	12.60	12.69
River/Lake	7.82	6.66	6.69	6.81
Sum Total	166.61	166.61	166.61	166.61
Impervious ratio	0.079	0.157	0.165	0.177

divided into five layers, i.e. three aquifers and two aquitards to separate each aquifer from another. Hydrogeological parameters of each aquifer and aquitard, i.e. hydraulic conductivity, specific yield, were set up referring to the results of *in situ* pumping tests (Geological Survey of Japan, 1988). The topsoil is mainly Kanto loam, except for alluvial silt in riparian zones. Experiments were carried out to obtain the characteristic curve of soil moisture and suction.

In addition, ground elevation and population were obtained from available databases; domestic water use, agricultural water use (mainly pumped from rivers outside the watershed) and industrial water use were deduced from the reports of the local government and organizations; and data of river sections were also collected.

Model validation

To validate the WEP model in the watershed, simulation was first performed for the period from January 1998 to December 2001. The initial and boundary conditions were determined according to the field observation results and “warming up” simulation of one year (1998) was first carried out to eliminate the possible effect of initial condition setting. The results after January 1999 were used for model validation.

Figure 3 shows a comparison of simulated discharge with observed discharge at the Kojirabashi station (see Fig. 2). The Kojirabashi station, with a command area of 47.6 km², is located at the middle reach of the Yata River. Figure 4 shows a comparison between simulated and observed groundwater levels for all the simultaneous observation wells within the watershed. Although there are some differences between the simulated and the observed results, all the comparisons show that the model gives quite satisfactory results.

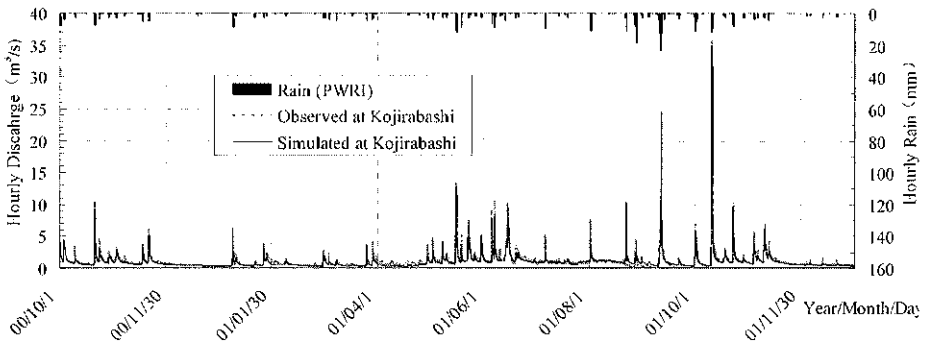


Fig. 3 Model validation using observed and simulated river discharges at the Kojirabashi.

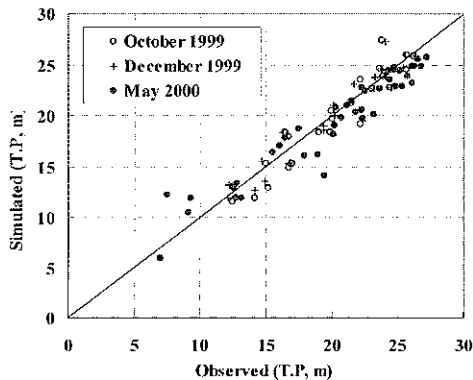


Fig. 4 Model validation using observed and simulated groundwater levels. T.P. means elevation above the averaged seawater level in the Tokyo Bay.

Influence of parameter estimation errors

The main parameters of the WEP model include the saturated hydraulic conductivity of soil layers, the permeability and specific yield of the unconfined aquifer, the hydraulic conductivity and thickness of riverbed material, the Manning's roughness of river flow and overland flow, vegetation parameters, and paddy field parameters. Some of the parameter sensitivity study of the WEP model has been performed in previous studies. For example, it was found that annual water budgets are quite sensitive to the saturated hydraulic conductivity, the annual groundwater outflow is very sensitive to the hydraulic conductivity of riverbed material, and the groundwater level is sensitively influenced by the aquifer permeability. In this study, we analysed the influence of the Manning's roughness on the river discharge hydrograph at the Kojirabashi station. It is found that the increase of the Manning's roughness of overland flow obviously decreases the peak discharge and delays the occurrence of the peak discharge, whereas the influence of the Manning's roughness of river flow is not so obvious in the Yata watershed. It is believed that the concentration time of overland flow is much longer than that of river flow in this watershed.

PROPAGATION OF RAINFALL ESTIMATION ERROR

Sensitivity of annual water budgets to rainfall input data

Annual water budget sensitivity is investigated by increasing/decreasing the hourly rainfall in 2000, which is equivalent to the systematic errors that occur in rainfall observation data. The result is shown in Fig. 5. The relative error means the estimation error of water budget divided by the budget corresponding to the precipitation in 2000. It can be seen that estimation errors of runoff and groundwater outflow are greater than the rainfall estimation error, though those of evapotranspiration and infiltration are smaller than the rainfall estimation error. This is because evapotranspiration is also influenced by energy budgets and infiltration is also affected by soil conductivity and groundwater level.

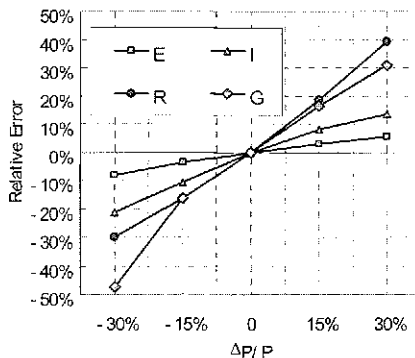


Fig. 5 Sensitivity of annual water budgets to rainfall input data. *E* is evapotranspiration, *I*, infiltration; *R*, direct runoff; *G*, groundwater outflow to rivers; and *P*, precipitation.

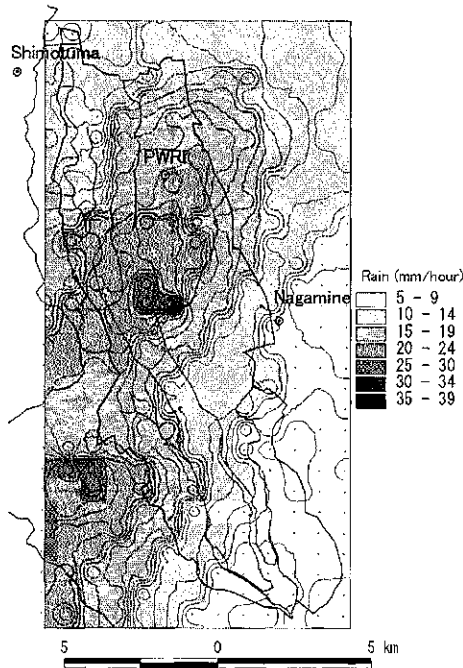


Fig. 6 Distribution of radar rainfall from 20:00 to 21:00 h on 10 October 2002.

Impact of rainfall distribution on river discharges

To study the impact of rainfall distribution on river discharges, hourly radar rainfall data from August to October 2001 were obtained from the Ministry of Land, Infrastructure and Transport (MLIT), Japan. The radar rainfall data have a resolution of about 1 km. During typhoon seasons, rainfall distribution is very uneven. Figure 6 shows an example of distribution of radar rainfall from 20:00 to 21:00 h on 10 October 2002 in the watershed.

Simulation results using the radar rainfall data are compared with those using the Thiessen method with two gauging stations (Shimotuma and Nagamine), and with those using three gauging stations (Shimotuma, Nagamine and PWRI). Figure 7 shows the comparisons of three rainfall events at the Kojirabashi station in 2001: (a) from 21 August 00:00 h to 23 August 24:00 h; (b) from 10 September 00:00 h to 12 September 24:00 h; and (c) from 10 October 00:00 h to 12 October 24:00 h. It can be seen that, in general, the results using radar rainfall data and those using three gauging stations are better matched with the observed than those using two gauging stations. The results using two gauging stations give a simulation error as big as 152% for the flood peak on 22 August, 4% for the flood peak on 11 September and 40% for the flood peak on 10 October. The reason the results using radar rainfall data do not show better matching with the observed data is that gauging stations downstream of and outside the watershed, rather than the three gauging stations mentioned above, were utilized by MLIT for the radar rainfall calibration against ground-gauged rainfall. The averaged discharges from 1 August to 31 October and relative simulation errors are shown in

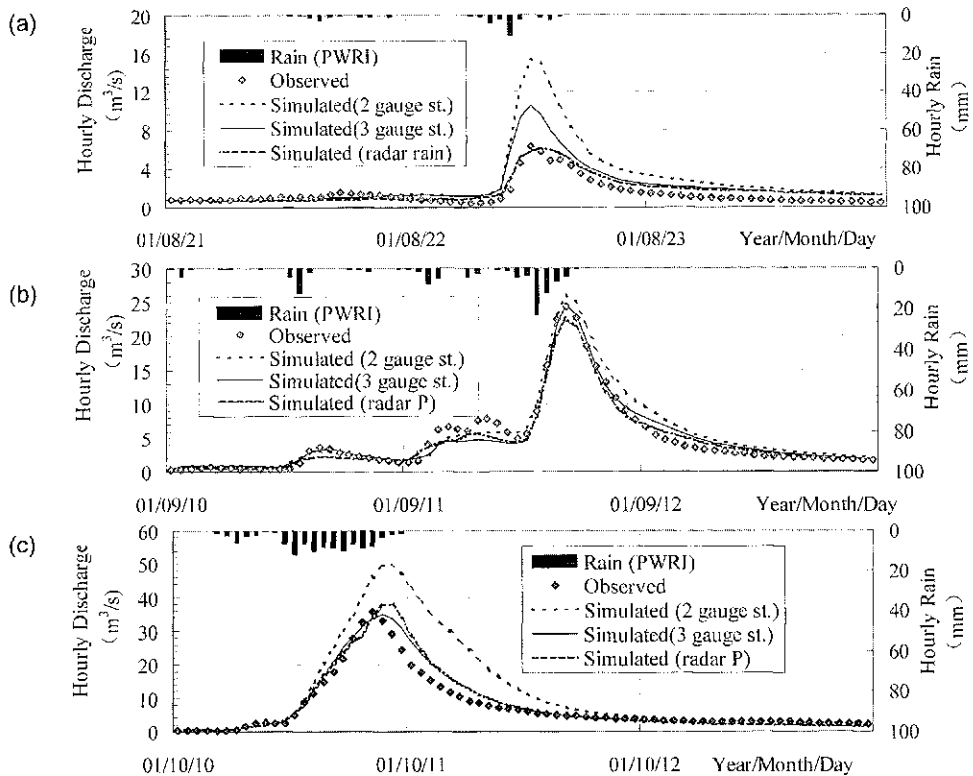


Fig. 7 Discharge comparisons during three rainfall events at the Kojirabashi in 2001: (a) from 21 August 00:00 h to 23 August 24:00 h; (b) from 10 September 00:00 h to 12 September 24:00 h; and (c) from 10 October 00:00 h to 12 October 24:00 h.

Table 2, from which the same remarks as above can be concluded but the results using two gauge stations do not show too big errors. It means that rainfall distributions may have less impact on the estimation of long-term water budgets.

It should be mentioned that the estimation errors of radar rainfall also influence river discharges. The radar rainfall errors can come from both radar observation and calibration based on gauge stations and they include the systematic error and the

Table 2 Averaged discharges from 1 August to 31 October 2001, at three sites.

Site	Observed ($\text{m}^3 \text{s}^{-1}$)	Simulated using two gauge st. rainfall ($\text{m}^3 \text{s}^{-1}$)	Simulated using three gauge st. rainfall ($\text{m}^3 \text{s}^{-1}$)	Simulated using radar rainfall ($\text{m}^3 \text{s}^{-1}$)
Kojirabashi	1.332	1.698 (27.5%)	1.499 (12.5%)	1.547 (16.5%)
Sakaimatu	1.125	1.302 (19.9%)	1.161 (3.2%)	1.226 (9.0%)
Takaoka	0.196	0.241 (23.0%)	0.244 (24.5%)	0.21 (7.1%)

Note: Values in brackets are relative errors compared with the observed values.

random error. The influence of radar rainfall errors on river discharges is closely related to the location of storm centre and the direction in which the storm comes to the watershed, and it will be carried out in the study of the next step.

CONCLUSIONS

In this study, through analysing the sensitivity of annual water budgets to rainfall estimation error and investigating the impact of rainfall spatial distribution on river discharges, it was found that the spatial distribution of rainfall during typhoon seasons has a great impact on river discharge prediction. However, the impact of rainfall distribution on seasonally averaged discharges becomes smaller than that on flood discharges. It is concluded that the WEP model is applicable to both short-term prediction of flood and long-term prediction of water budgets with satisfactory accuracy and distributed hydrological modelling needs distributed rainfall data to give accurate predictions.

Acknowledgements Professor Yoshihisa Kawahara, Kagawa University, Japan, Dr Guangheng Ni Nippon, Koei Co. Ltd, Japan and Mr Koei Tojima, Docon Co. Ltd, Japan, are gratefully acknowledged for their work in the WEP Model Development and Application project. Sincere thanks are also given to Mr Katuyuki Koike of the Foundation of River and Basin Integrated Communications, Japan, and to Mr Tadashi Matuura in the Ministry of Land, Infrastructure and Transport, Japan, for providing information on radar rainfall.

REFERENCES

- Geological Survey of Japan (1988) Environmental geological map of the Tsukuba Science City and its surroundings (in Japanese), 23-2. Tsukuba, Japan.
- Ichikawa, M., Takayama, S., Tanaka, T., Taguchi, Y. & Sakura, Y. (1976) Study on the effects of urbanization on hydrological cycle (in Japanese). *Research on Tsukuba* **1**, 10-21.
- Jia, Y. & Tamai, N. (1998a) Integrated analysis of water and heat balance in Tokyo metropolis with a distributed model. *J. Japan Soc. Hydrol. & Water Resour.* **11**(1), 150-163.
- Jia, Y. & Tamai, N. (1998b) Modelling infiltration into a multi-layered soil during an unsteady rain. *J. Hydrosoci. Hydraul. Engng JSCE* **16**(2), 1-10.
- Jia, Y., Ni, G., Kawahara, Y. & Suetsugu, T. (2001) Development of WEP model and its application to an urban watershed. *Hydrol. Processes* **15**, 2175-2194.
- Refsgaard, J. C. & Storm, B. (1995) Chapter 23 MIKE SHE. In: *Computer Models of Watershed Hydrology* (ed. by V. J. Singh), 809-846. Water Resources Publ., Littleton, Colorado, USA.